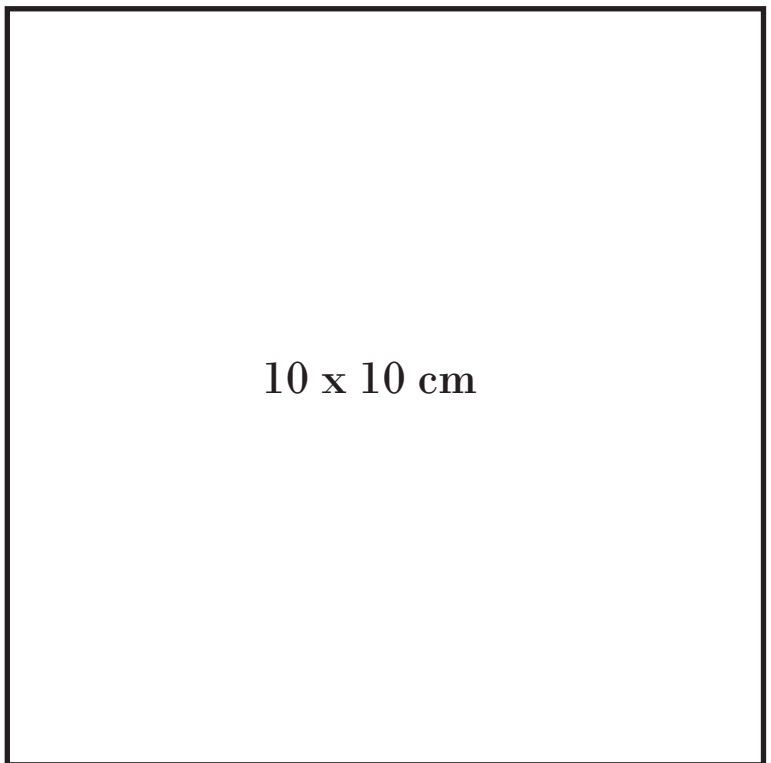


EU 34-48/UK 6-20/US 2-16

- 1 X STOF/FABRIC
- 1 X VLIESELINIE/INTERFACING
- INCL. 1 CM SØM/SEAM ALLOWANCE

- EU 48/ UK 20/ US 16
- EU 46/ UK 18/ US 14
- EU 44/ UK 16/ US 12
- EU 42/ UK 14/ US 10
- EU 40/ UK 12/ US 8
- EU 38/ UK 10/ US 6
- EU 36/ UK 8/ US 4
- EU 34/ UK 6/ US 2

M/Cf cut on fold



10 x 10 cm

ET 48/ CK 20/ CS 16

ET 40/ CK 18/ CS 14

ET 44/ CK 16/ CS 12

ET 42/ CK 14/ CS 10

ET 40/ CK 12/ CS 8

ET 38/ CK 10/ CS 6

ET 36/ CK 8/ CS 4

ET 34/ CK 6/ CS 2

ET 48/ CK 20/ CS 16

HOW TO DO FASHION

NO.11 MALMØ

HALSBELÆGNING FOR/NECK FACING FRONT (VERSION 1)

ET 34-48/CK 6-20/CS 2-16

1 X STOF/FABRIC

CUT INTO/INTEPÆKING

ET 34/ CK 6/ CS 2

ET 36/ CK 8/ CS 4

ET 38/ CK 10/ CS 6

ET 40/ CK 12/ CS 8

ET 42/ CK 14/ CS 10

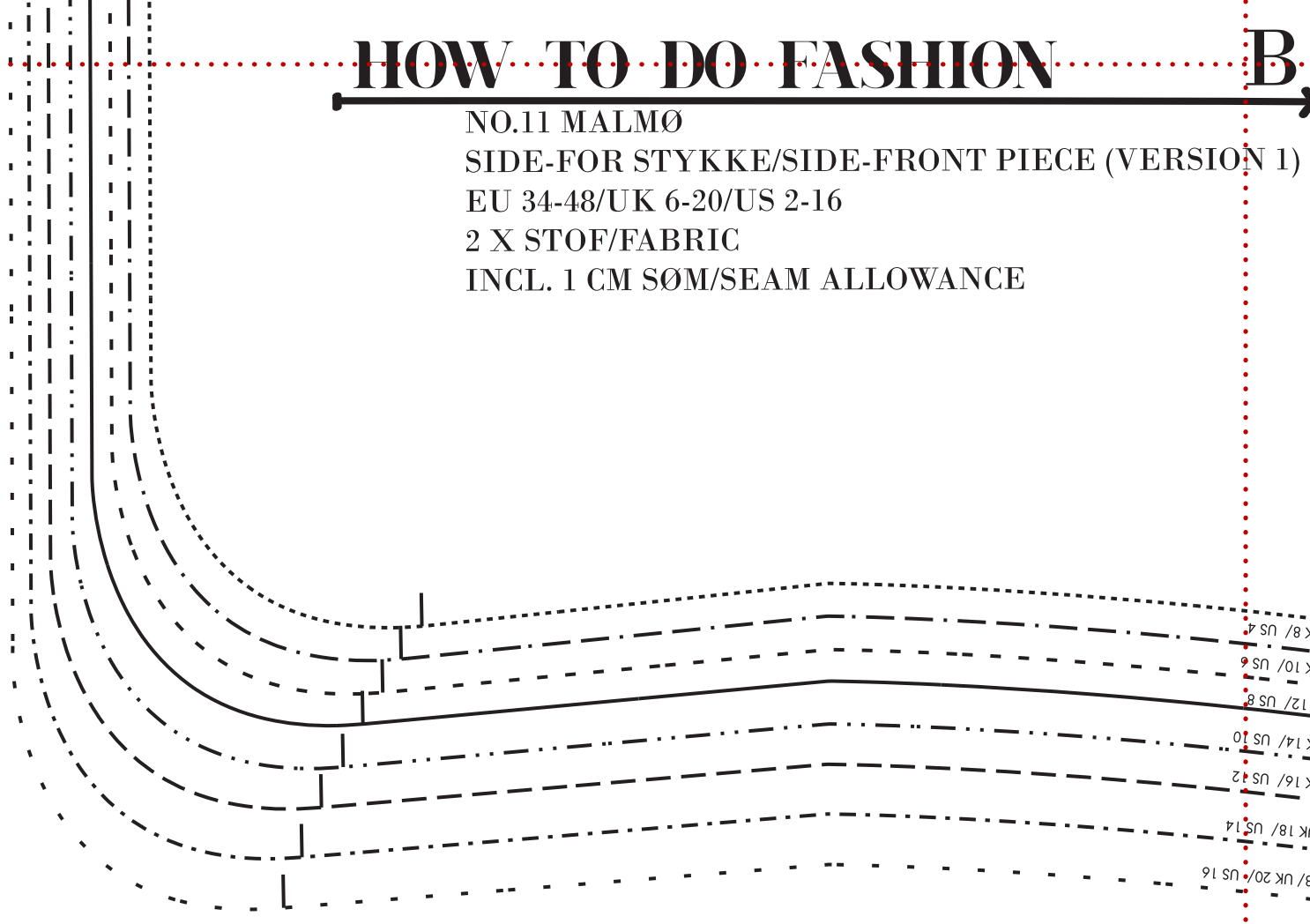
ET 44/ CK 16/ CS 12

ET 46/ CK 18/ CS 14

ET 48/ CK 20/ CS 16

HOW TO DO FASHION

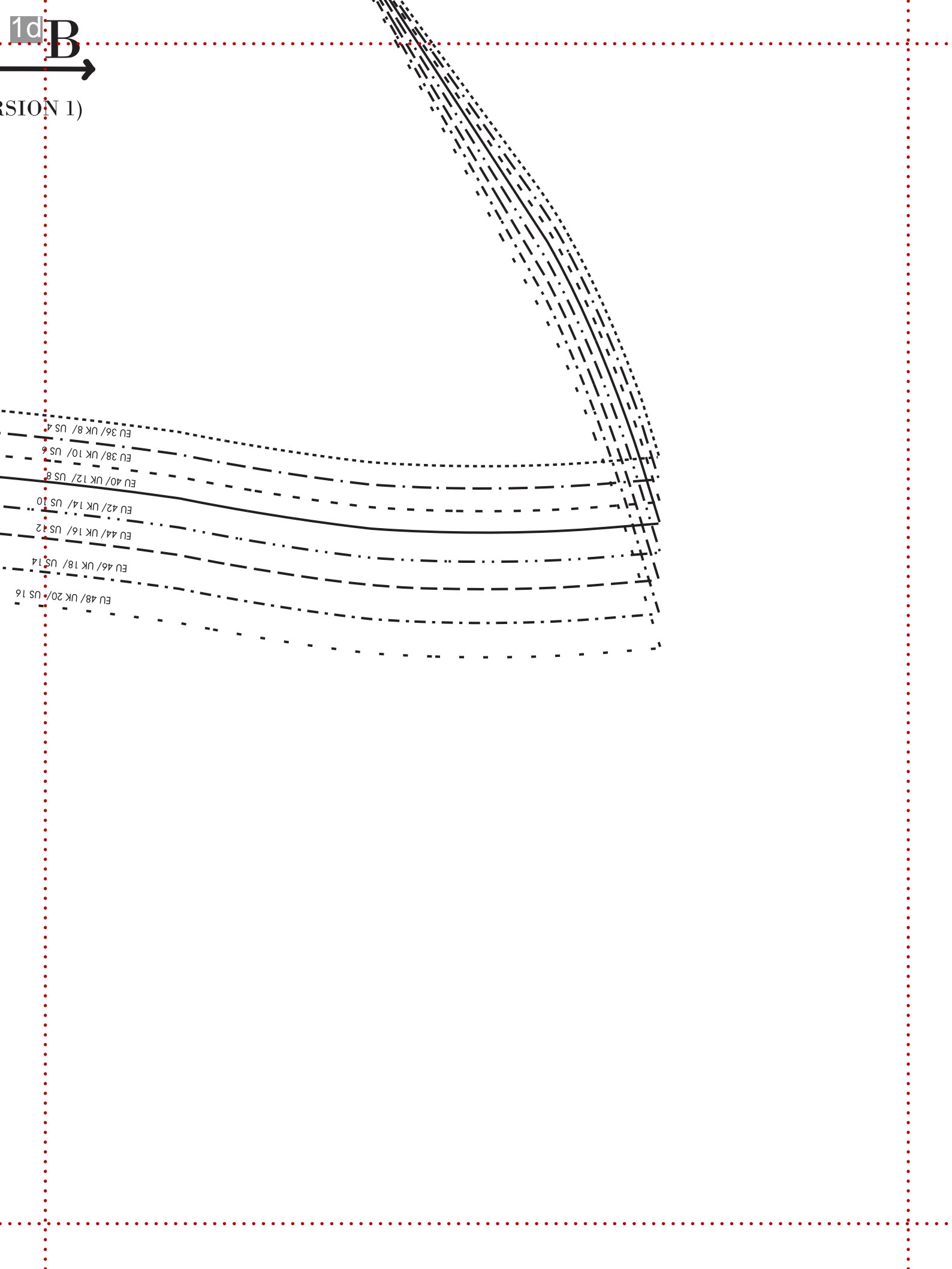
NO.11 MALMØ
 SIDE-FOR STYKKE/SIDE-FRONT PIECE (VERSION 1)
 EU 34-48/UK 6-20/US 2-16
 2 X STOF/FABRIC
 INCL. 1 CM SØM/SEAM ALLOWANCE

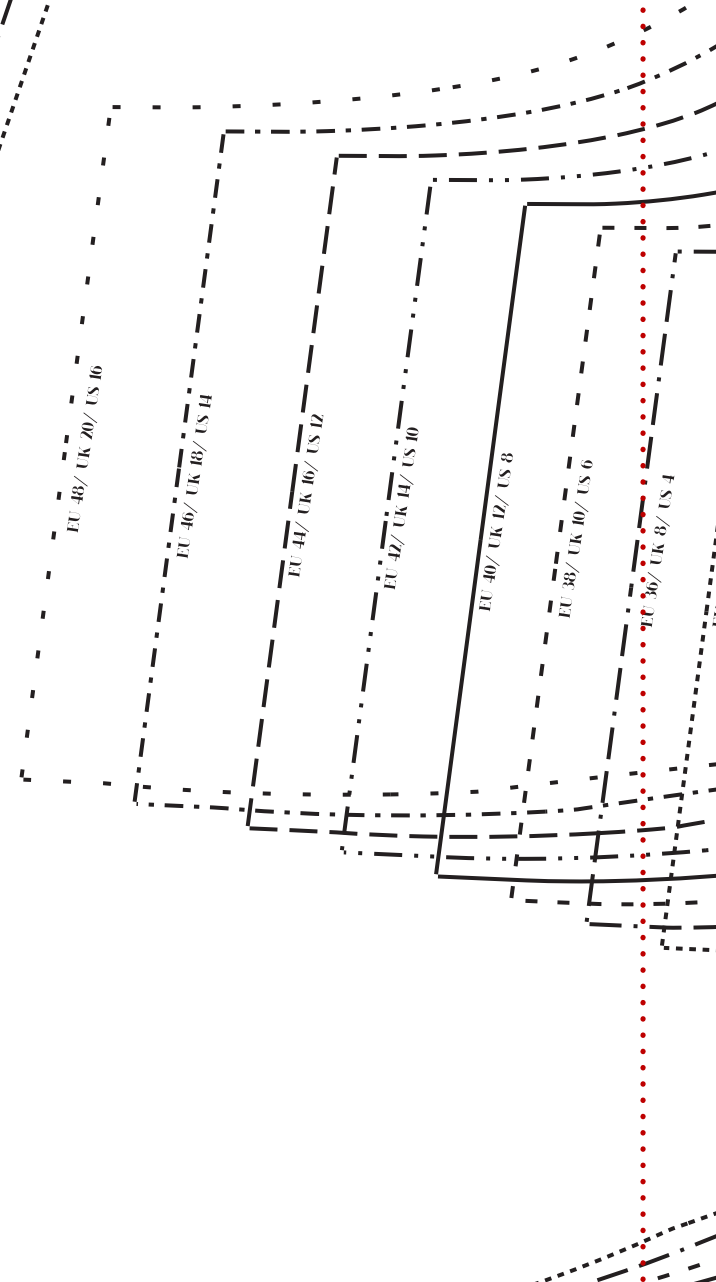
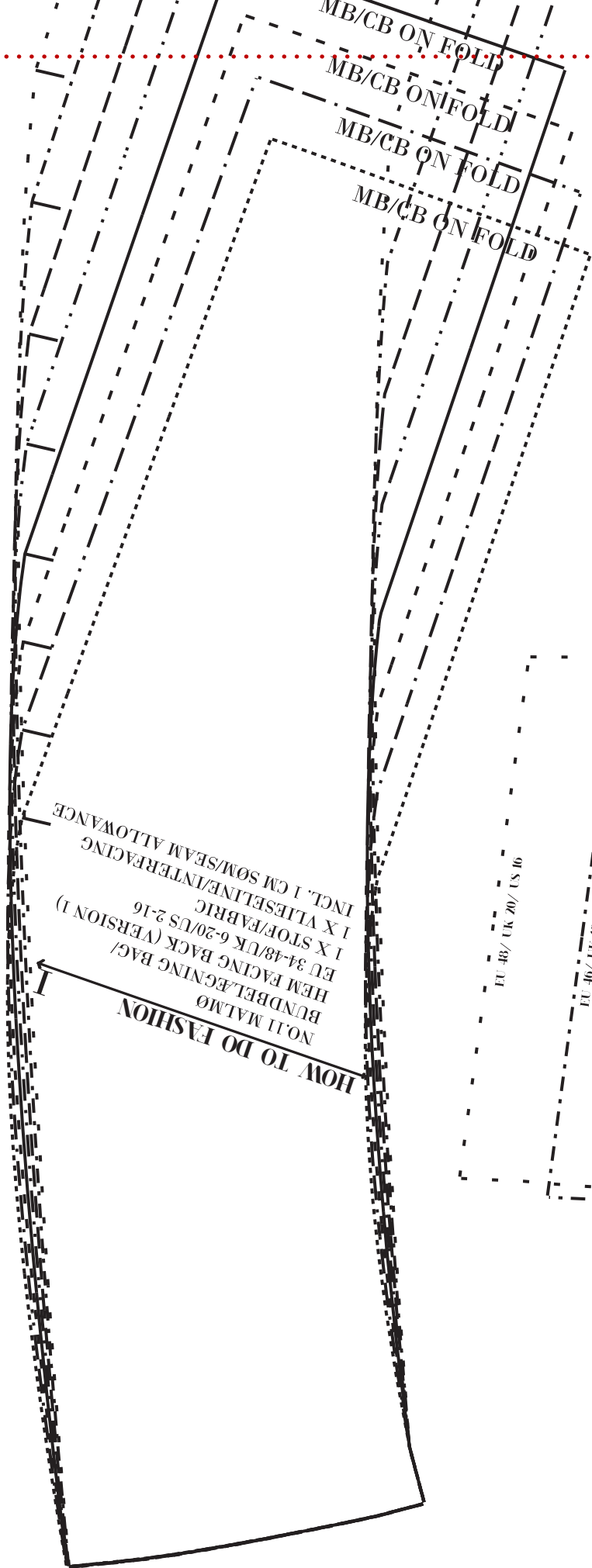


1d

B

VERSION 1)





HOW TO DO FASHION C

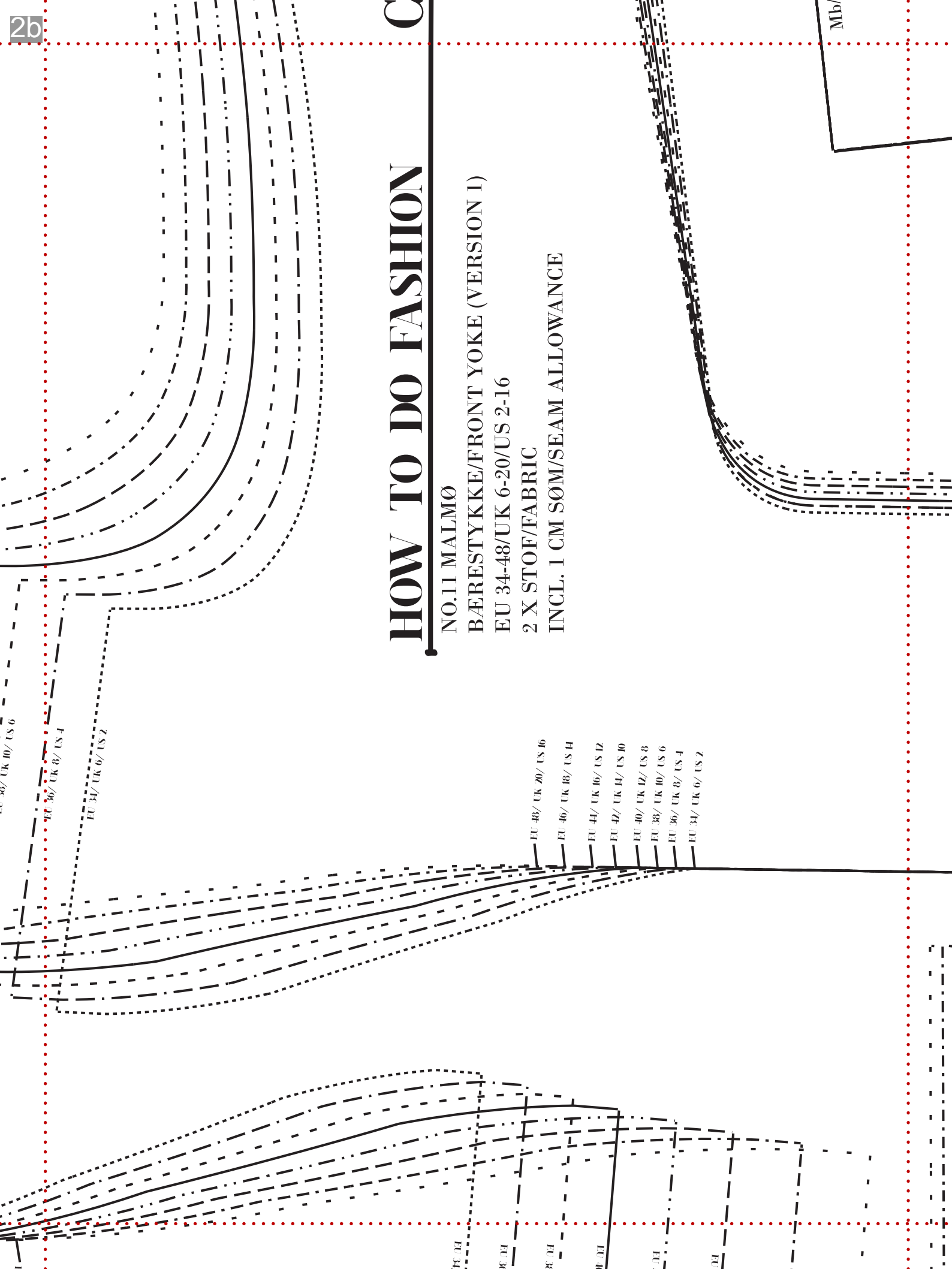
NO.11 MALMØ

BÆRESTYKKE/FRONT YOKE (VERSION 1)

EU 34-48/UK 6-20/US 2-16

2 X STOF/FABRIC

INCL. 1 CM SØM/SEAM ALLOWANCE



EU 38/ UK 10/ US 6

EU 36/ UK 8/ US 4

EU 34/ UK 6/ US 2

EU 48/ UK 20/ US 16

EU 46/ UK 18/ US 14

EU 44/ UK 16/ US 12

EU 42/ UK 14/ US 10

EU 40/ UK 12/ US 8

EU 38/ UK 10/ US 6

EU 36/ UK 8/ US 4

EU 34/ UK 6/ US 2

EU 34

EU 36

EU 38

EU 40

EU 42

EU 44

EU 46

EU 48

2c

FRONTION 1)
F

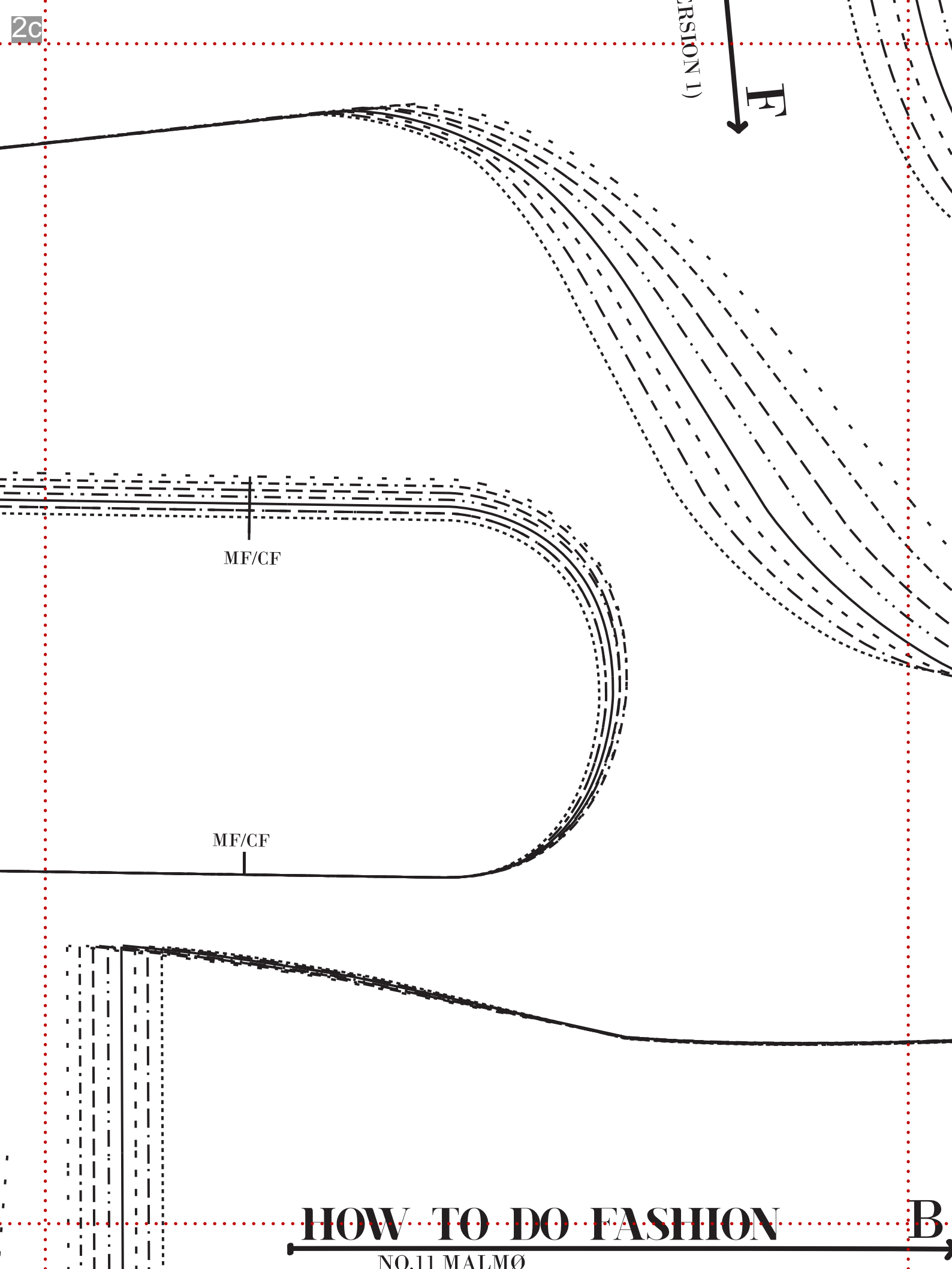
MF/CF

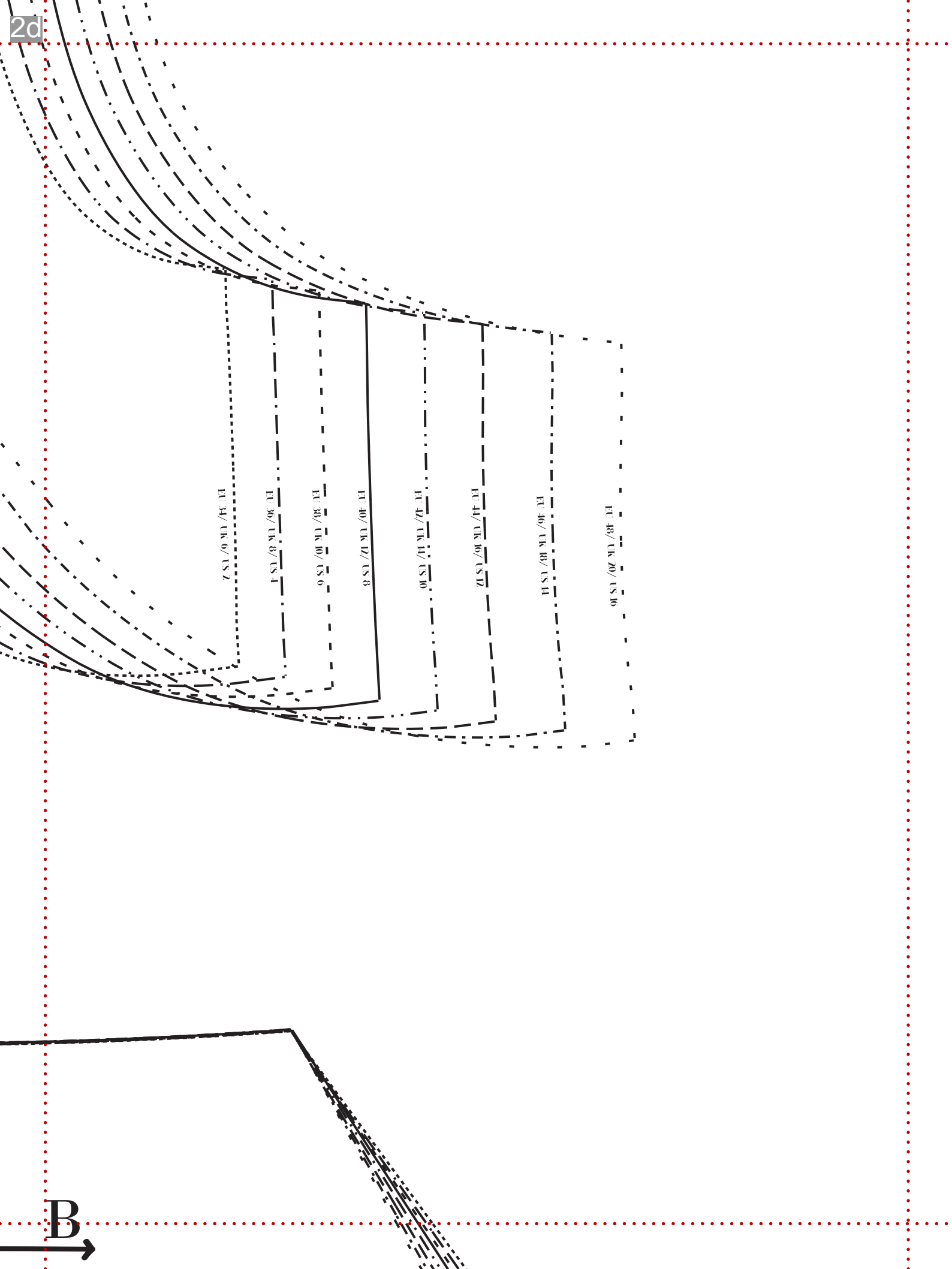
MF/CF

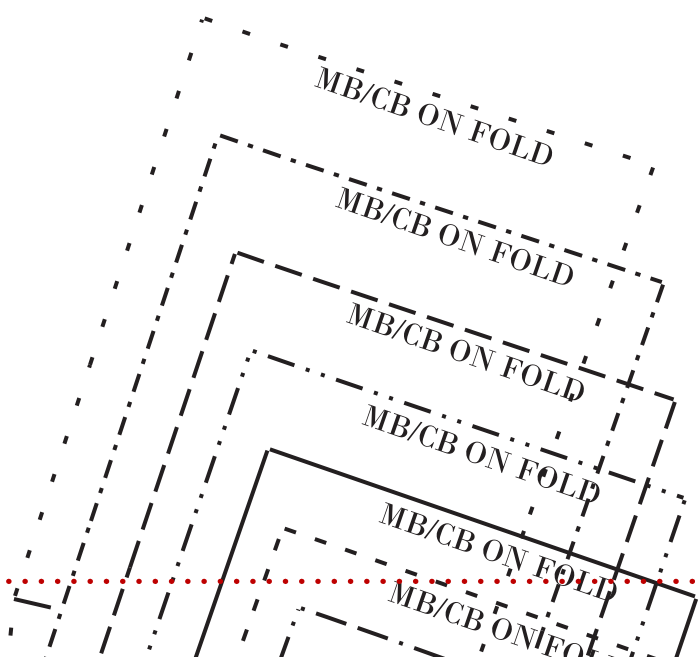
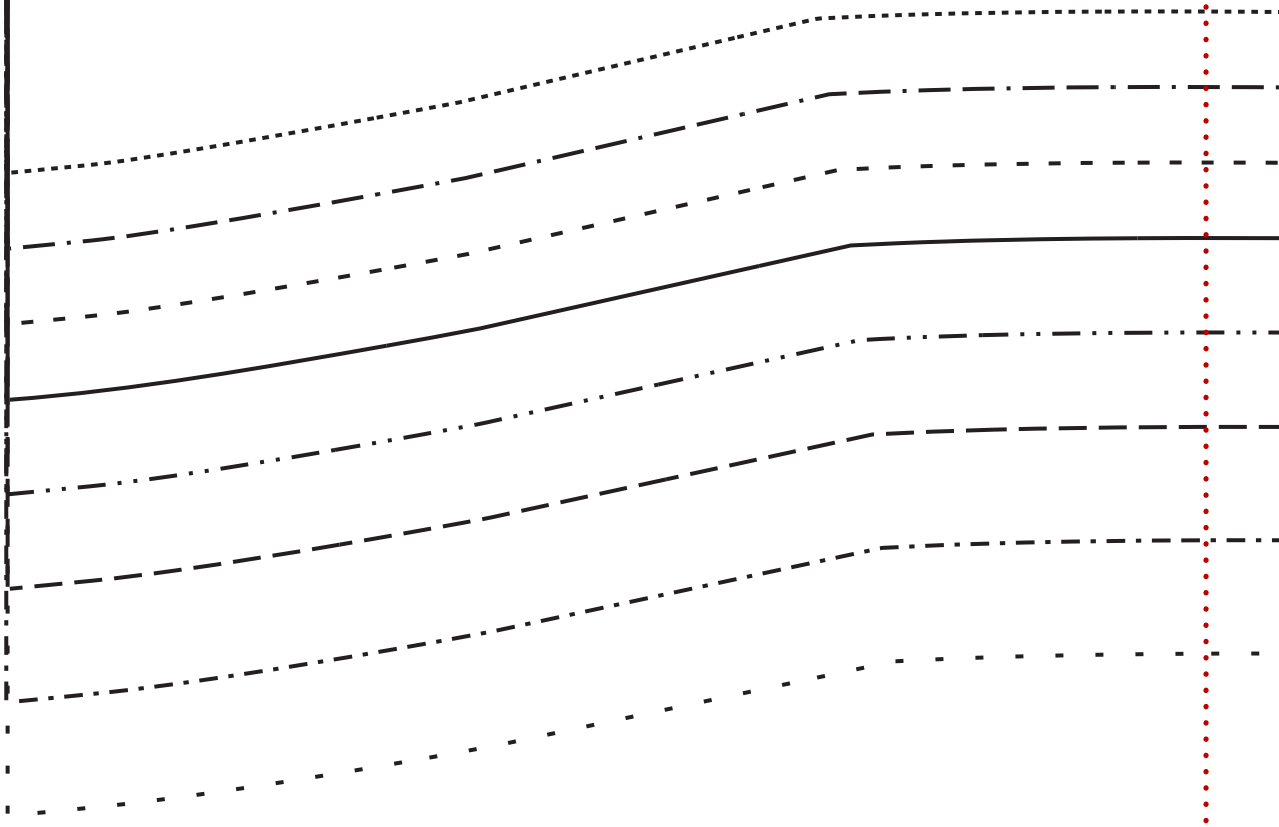
HOW TO DO FASHION

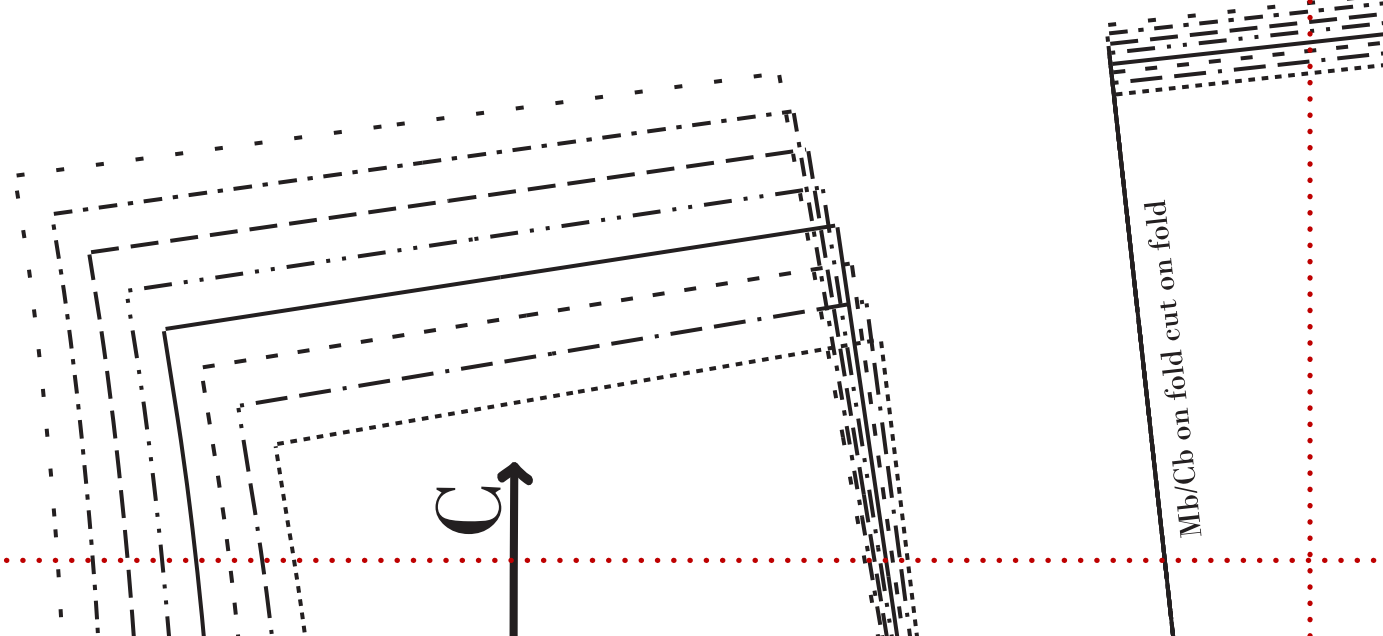
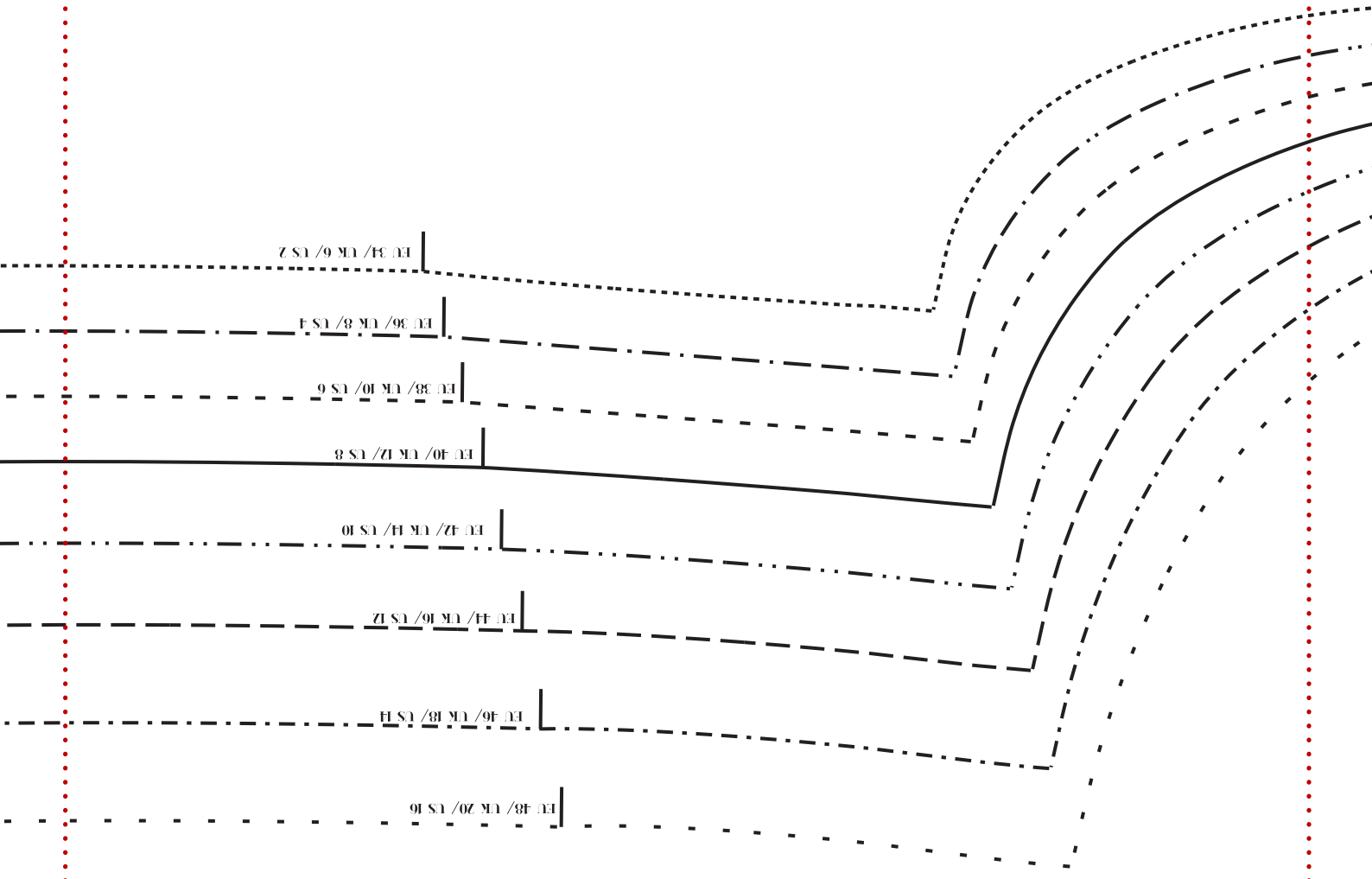
B

NO.11 MALMØ

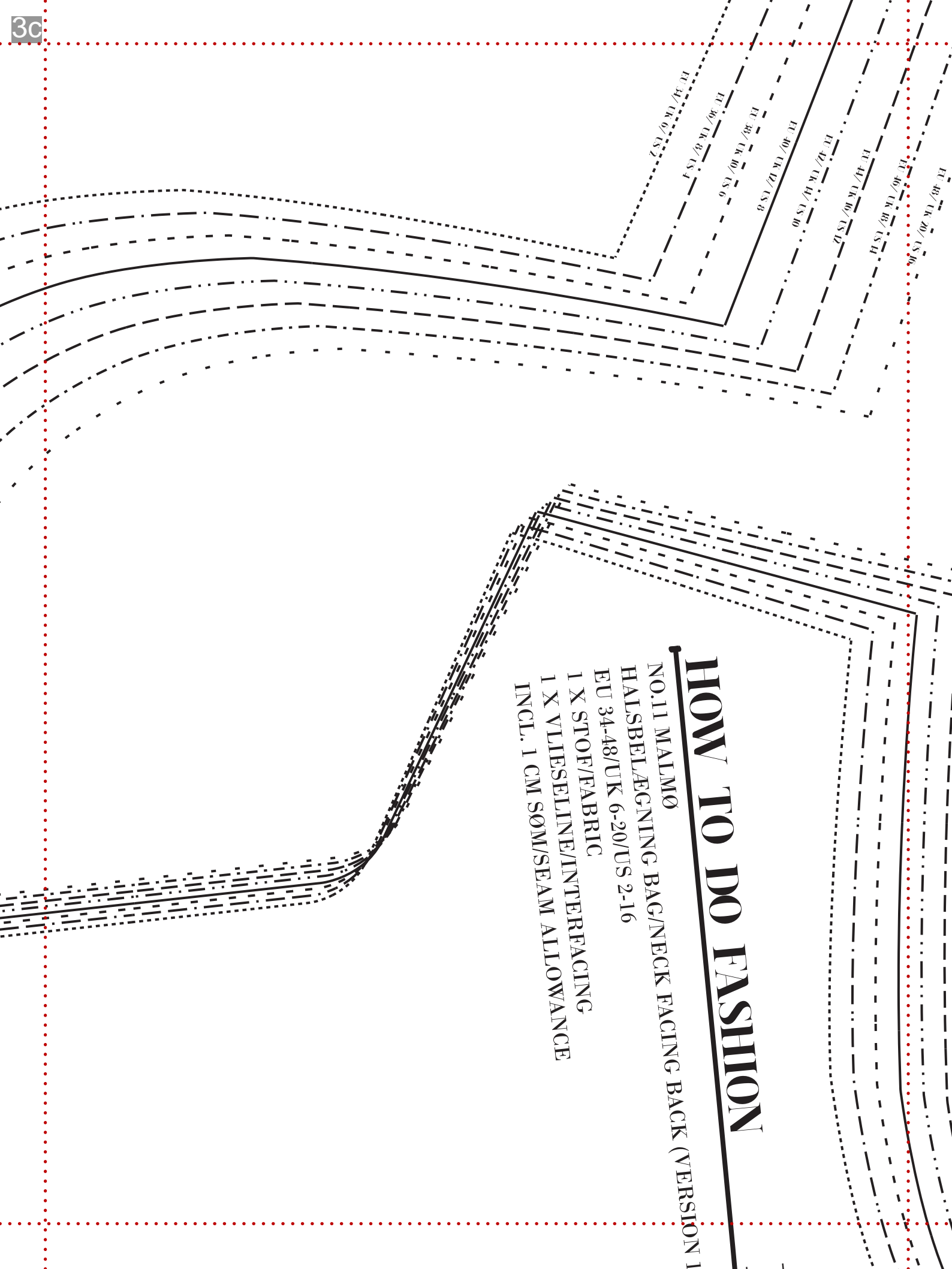








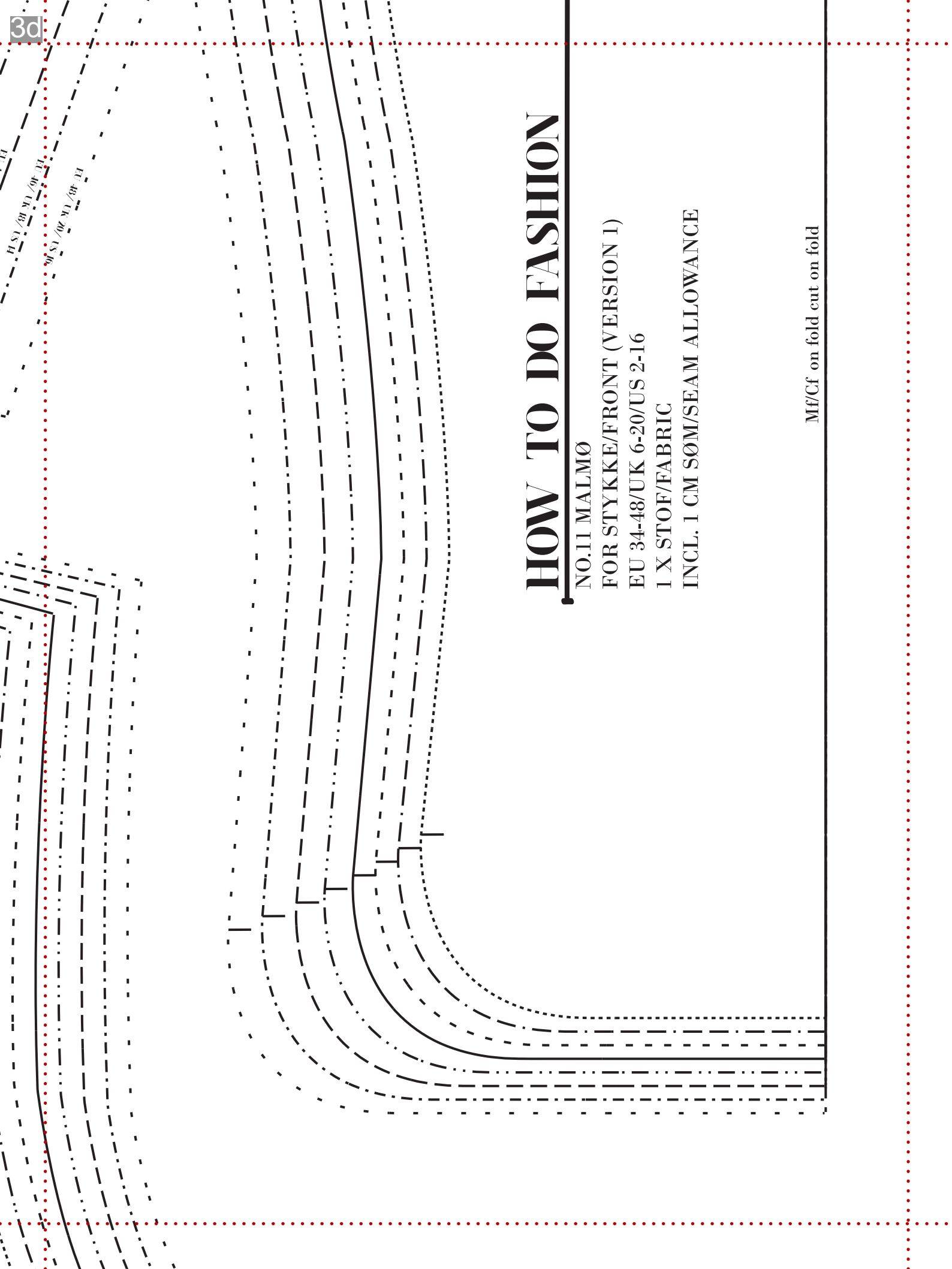
Mb/Cb on fold cut on fold



HOW TO DO FASHION

NO. 11 MALMØ
 HALSBELÆGNING BAG/NECK FACING BAG (VERSION 1)
 EU 34-48/UK 6-20/US 2-16
 1 X STOF/FABRIC
 1 X VLESELLENE/INTERFACING
 INCL. 1 CM SØM/SEAM ALLOWANCE

EU 34/UK 6/US 2
 EU 36/UK 8/US 4
 EU 38/UK 10/US 6
 EU 40/UK 12/US 8
 EU 42/UK 14/US 10
 EU 44/UK 16/US 12
 EU 46/UK 18/US 14
 EU 48/UK 20/US 16



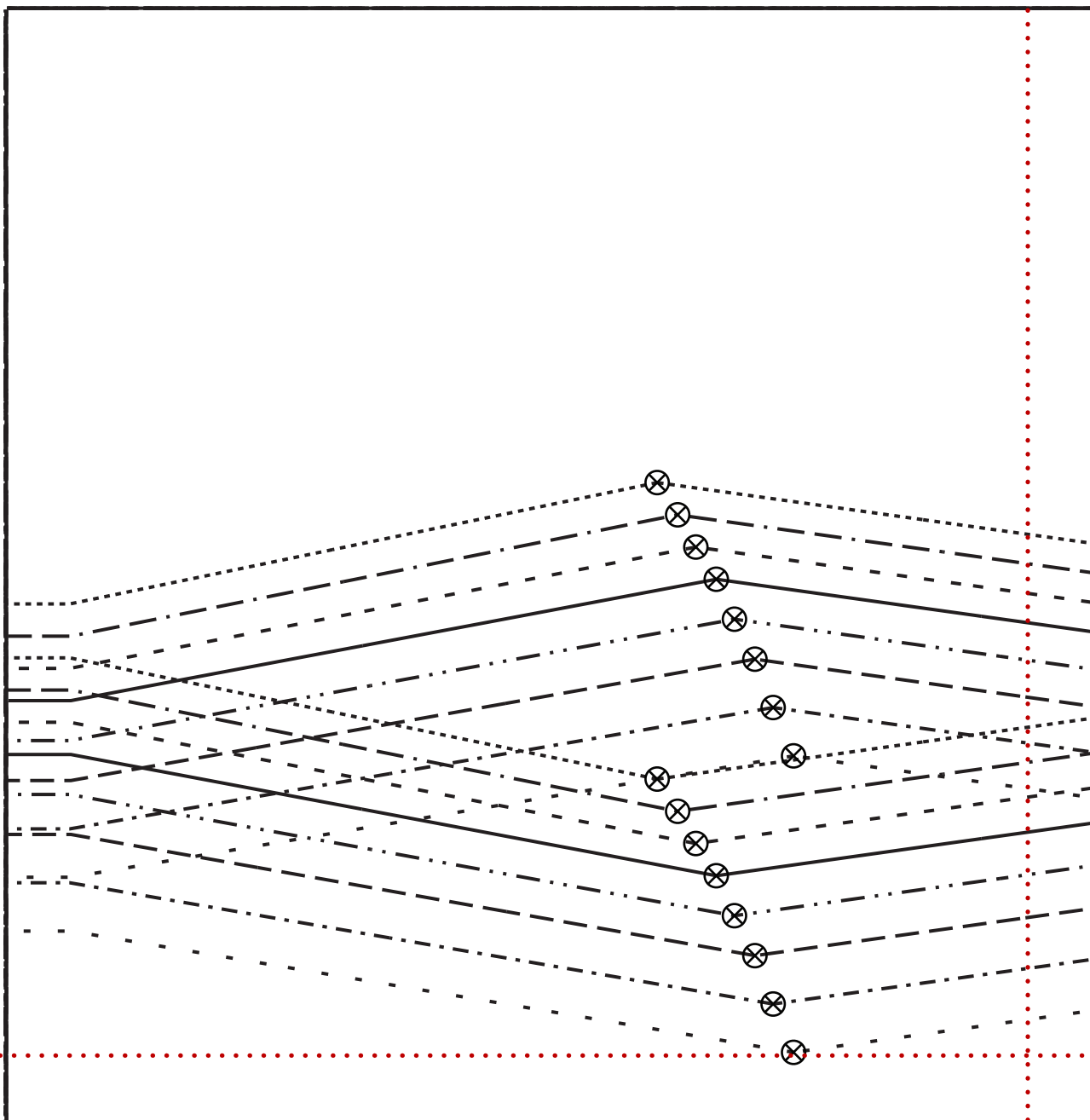
HOW TO DO FASHION

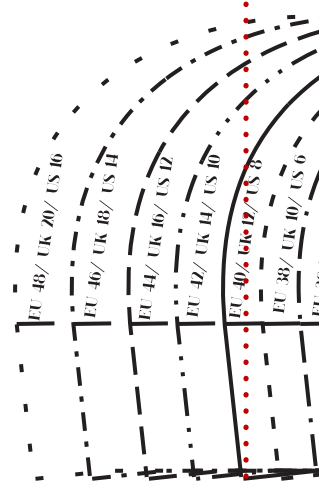
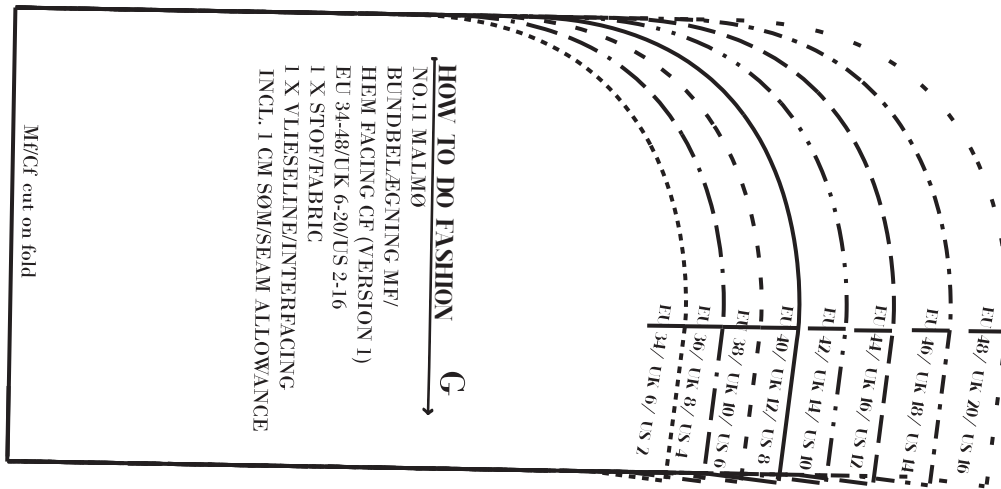
NO.11 MALMØ
FOR STYKKE/FRONT (VERSION 1)
EU 34-48/UK 6-20/US 2-16
1 X STOF/FABRIC
INCL. 1 CM SØM/SEAM ALLOWANCE

Mf/Cf on fold cut on fold

HOW to do FASHION

This pattern, text, graphics and photographs are copyrighted in 2018 by HOW TO DO FASHION.
All right reserved. This pattern is only for personal non-commercial use.

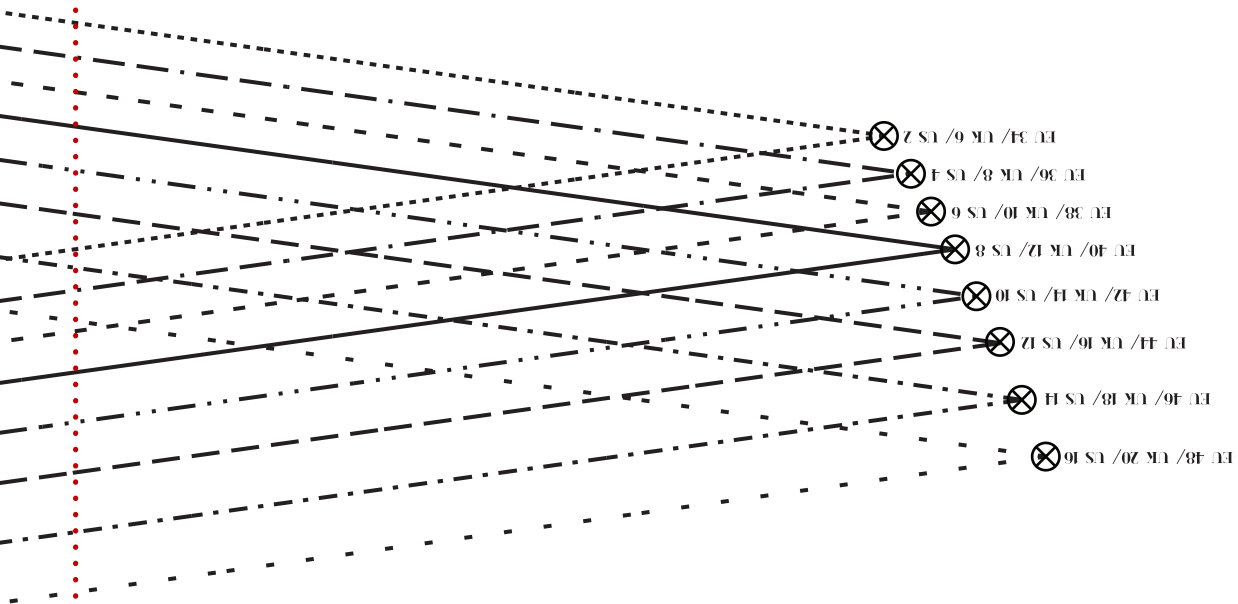




Mb/Cb cut on fold

HOW TO DO FASHION

NO.11 MALMØ
BAG STYKKE/BACK (VERSION 1)
 EU 34-48/UK 6-20/US 2-16
 1 X STOF/FABRIC
 INCL. 1 CM SØM/SEAM ALLOWANCE





Size chart EU /UK/US

	34/6/2	36/8/4
CHEST		
CM	84	88
INCH	33.1	34.6
WAIST		
CM	66	70
INCH	26.0	27.6
HIP		
CM	94	98
INCH	37.0	38.6

Finished measurement No.11 MA

CHEST

WAIST

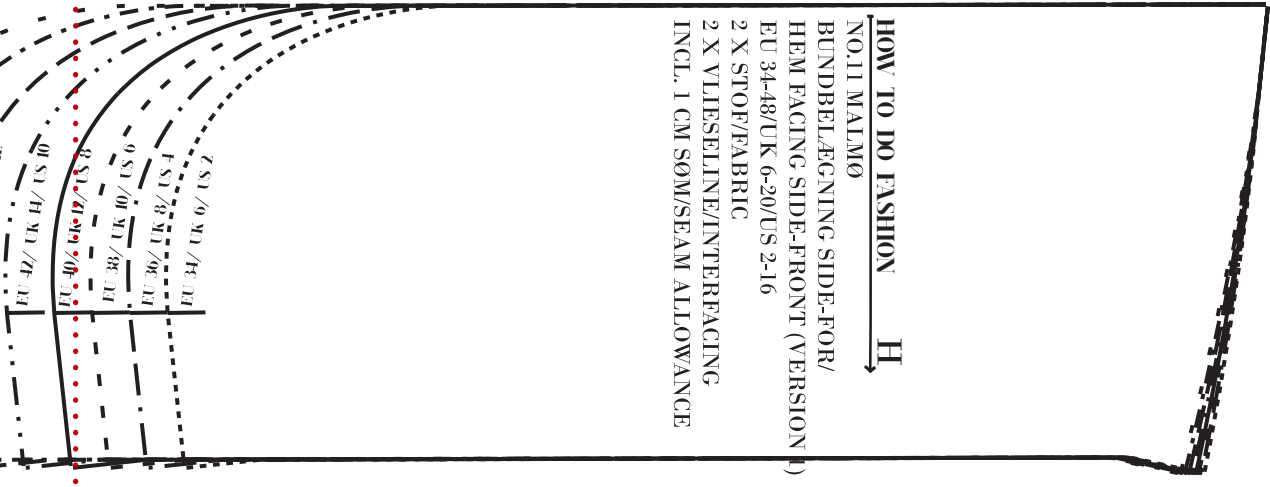
FULL BOTTOM MEASUREMENT

LENGTH FROM TOP OF SHOULDER TO BOTTOM

ALL PATTERNS

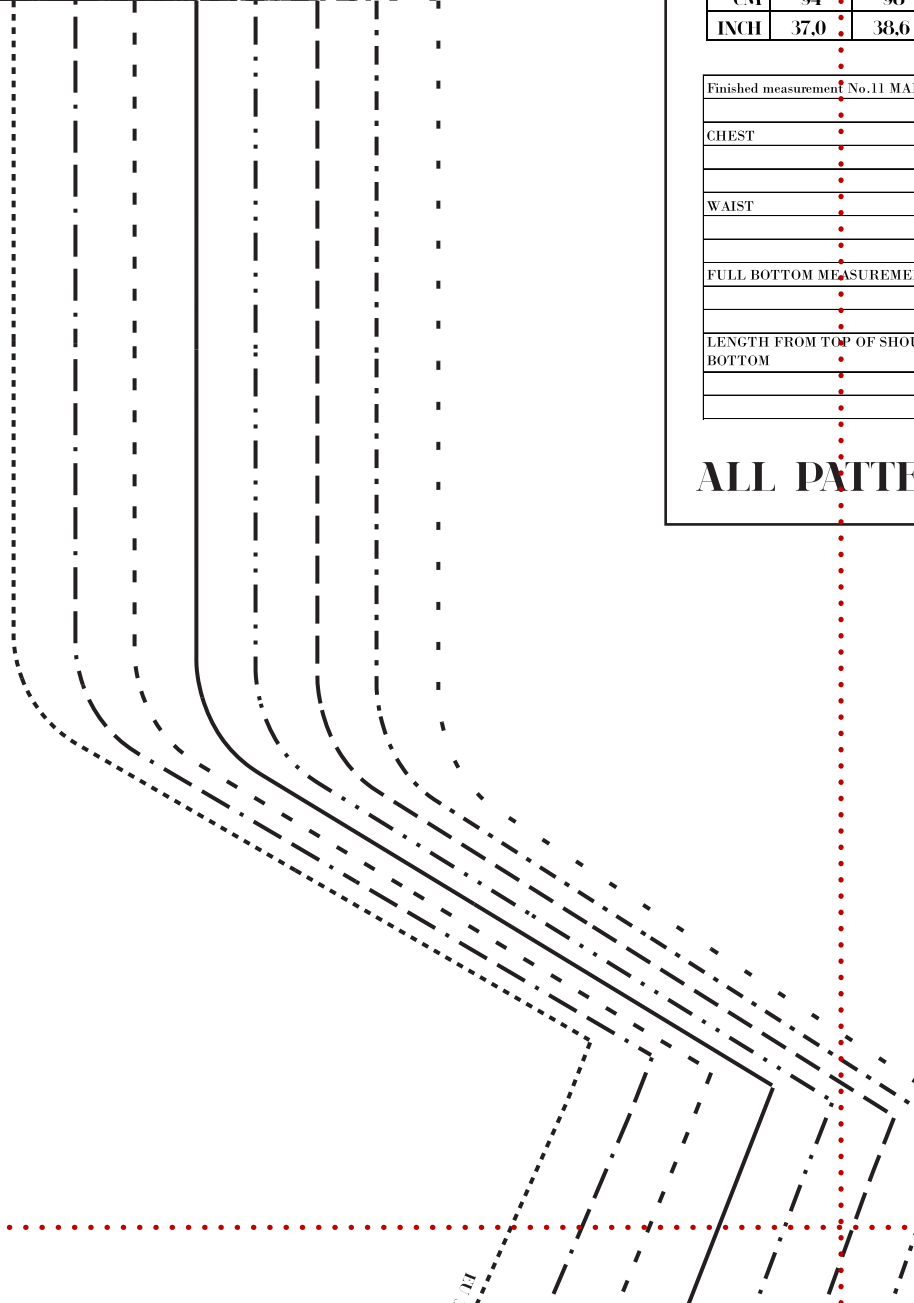
HOW TO DO FASHION H

NO.11 MALLMØ
 BUNDEBELÆGNING-SIDE-FOR/
 HEM FACING SIDE-FRONT (VERSION 1)
 EU 34-48/UK 6-20/US 2-16
 2 X STOF/FABRIC
 2 X VLESELINIE/INTERFACING
 INCL. 1 CM SØM/SEAM ALLOWANCE



FASHION D

ION 1)
 OWANCE





SYMBOL

- Fold i pilens retning / Fold in direction of arrow
- Trådretning / Grainline
- Samle hak / Notches
- Indsnits punkt/ Dart point

- EU 34/ UK 6/ US 2
- EU 36/ UK 8/ US 4
- EU 38/ UK 10/ US 6
- EU 40/ UK 12/ US 8
- EU 42/ UK 14/ US 10
- EU 44/ UK 16/ US 12
- EU 46/ UK 18/ US 14
- EU 48/ UK 20/ US 16

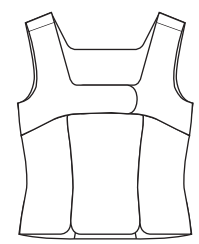
Chart 11/UK/US

34/6/2	36/8/4	38/10/6	40/12/8	42/14/10	44/16/12	46/18/14	48/20/16
84	88	92	96	101	106	112	118
33,1	34,6	36,2	37,8	39,8	41,7	44,1	46,5
66	70	74	78	83	88	94	100
26,0	27,6	29,1	30,7	32,7	34,6	37,0	39,4
94	98	102	106	111	116	122	128
37,0	38,6	40,2	41,7	43,7	45,7	48,0	50,4

HOW TO MEASURE

- CHEST measured at the top of the breast.
- WAIST measured the narrowest point.
- HIP measured at the widest point.

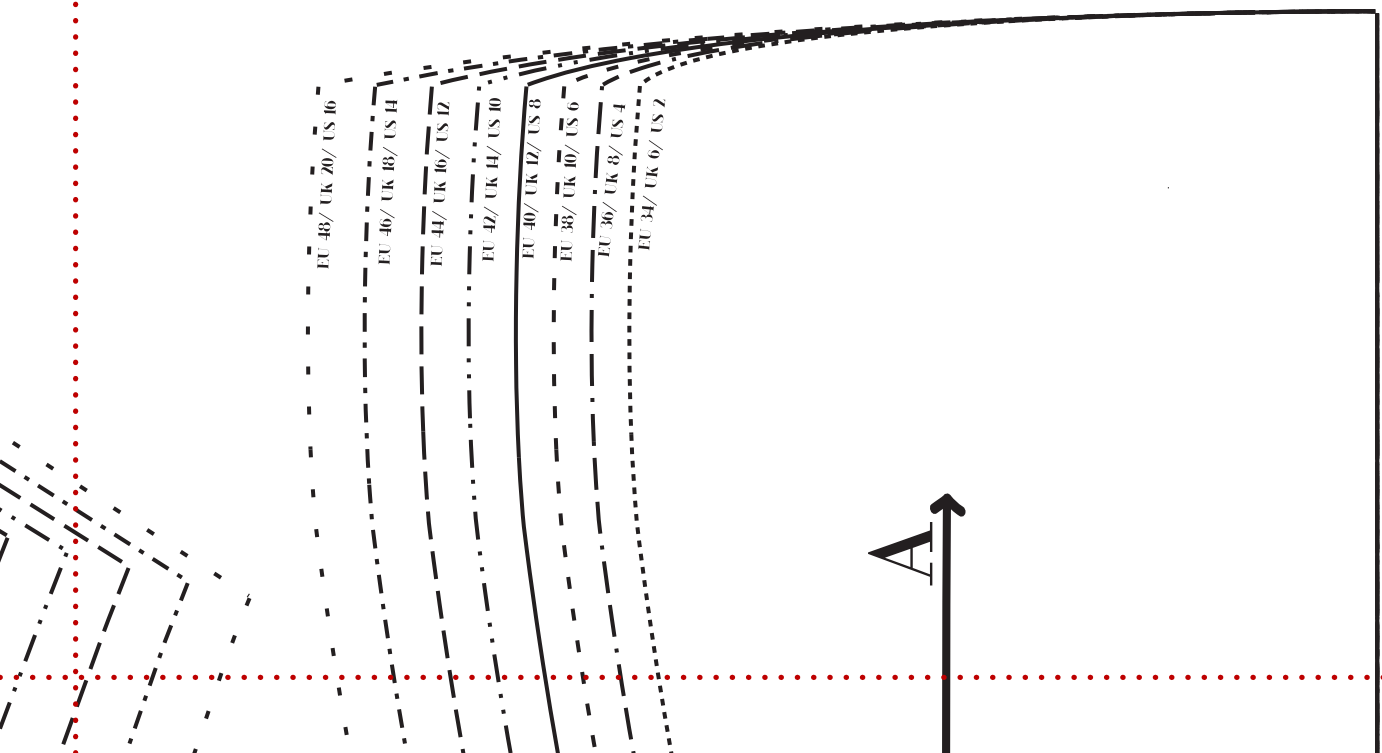
NOTE! measure horizontally around the body.



Measurement No.11 MALMO TOP

	34/6/2	36/8/4	38/10/6	40/12/8	42/14/10	44/16/12	46/18/14	48/20/16
CM	85	89	93	97	102	107	113	119
INCH	33,5	35,0	36,6	38,2	40,2	42,1	44,5	46,9
CM	70,5	74,5	78,5	82,5	87,5	92,5	98,5	104,5
INCH	27,8	29,3	30,9	32,5	34,4	36,4	38,8	41,1
CM	88	92	96	100	105	110	116	122
INCH	34,6	36,2	37,8	39,4	41,3	43,3	45,7	48,0
CM	48,6	49,4	50,2	51	51,8	52,6	53,4	54,2
INCH	19,1	19,4	19,8	20,1	20,4	20,7	21,0	21,3

ALL PATTERN PIECES ARE INCL. 1 CM (3/8 INCH) SEAM ALLOWANCE.

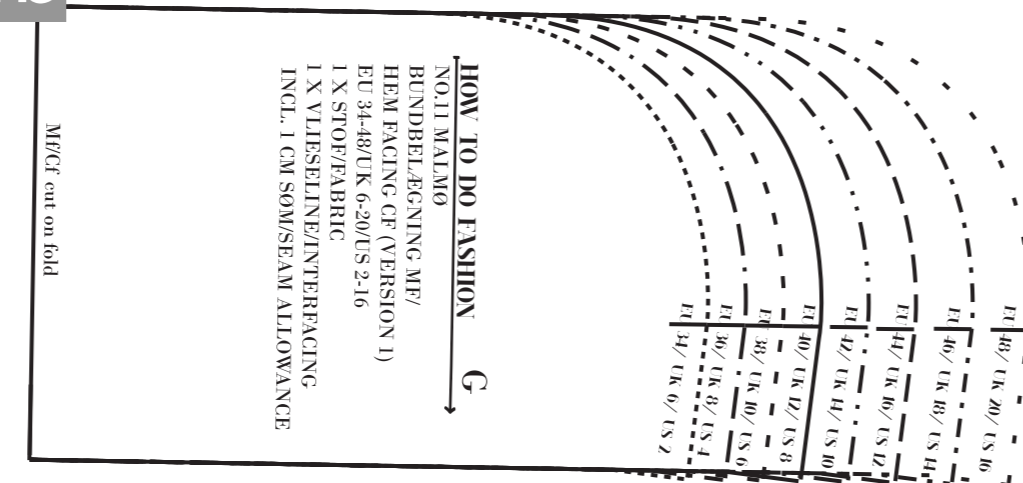


4a

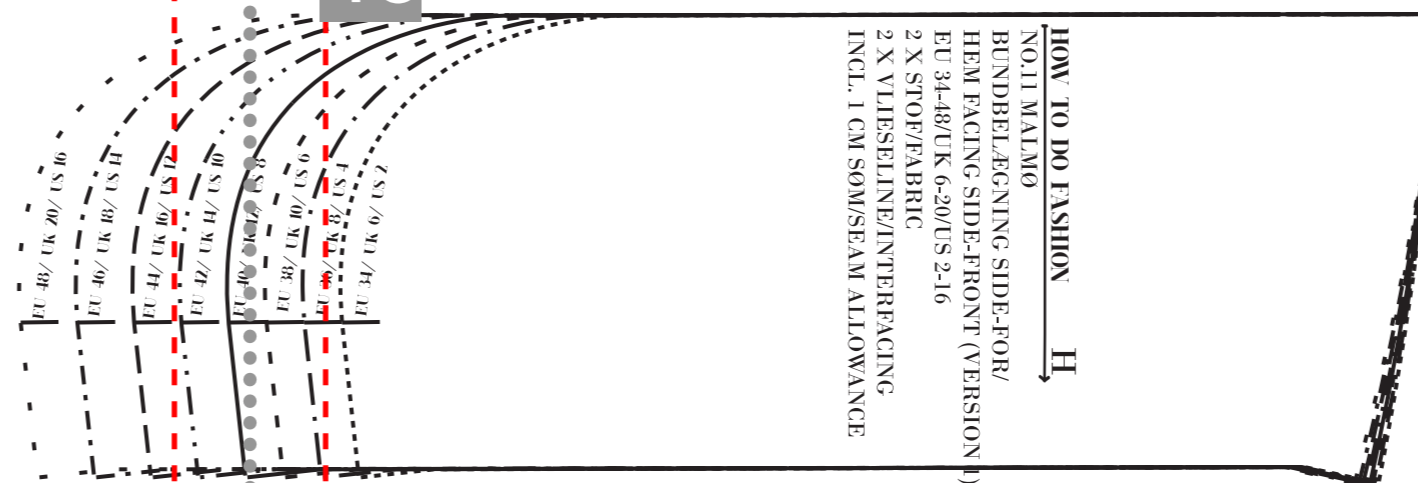
How to do FASHION

This pattern, text, graphics and photographs are copyrighted in 2018 by HOW TO DO FASHION. All right reserved. This pattern is only for personal non-commercial use.

4b



4c



SYMBOL
- fold in direction of arrow
-> fold in direction of arrow
-> front view / back view
-> inside pocket / start point

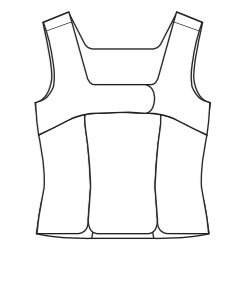
1) 34/UK 6/US 2
2) 36/UK 6/US 4
3) 38/UK 6/US 6
4) 40/UK 6/US 8
5) 42/UK 6/US 10
6) 44/UK 6/US 12
7) 46/UK 6/US 14
8) 48/UK 6/US 16

Size chart in cm / US

Size	34/6	36/6	38/6	40/6	42/6	44/6	46/6	48/6
CHES	88	92	96	100	104	108	112	116
CM	88	92	96	100	104	108	112	116
INCH	34.6	36.2	37.8	39.4	41.0	42.6	44.1	45.7
WAIST	66	70	74	78	82	86	90	94
CM	66	70	74	78	82	86	90	94
INCH	26.0	27.6	29.1	30.7	32.2	33.8	35.4	37.0
HIP	94	98	102	106	110	114	118	122
CM	94	98	102	106	110	114	118	122
INCH	37.0	38.6	40.2	41.7	43.3	44.9	46.5	48.1

HOW TO MEASURE

WASH measured at the top of the bust.
WAIST measured at the narrowest point.
HIP measured at the widest point.
NOTE: measure horizontally around the body.



ALL PATTERN PIECES ARE INCL. 1 CM (3/8 INCH) SEAM ALLOWANCE.

3a

3b

3c

3d

HOW TO DO FASHION

NO.11 MALMO
FRONT STYKKE/FRONT (VERSION 1)
EU 34-48/UK 6-20/US 2-16
1 X STOP/FABRIC
INCL. 1 CM 3/8 SEAM ALLOWANCE

M/CF on fold cut on fold

2a

2b

2c

2d

HOW TO DO FASHION

NO.11 MALMO
R-ERESTYKKE/FRONT YOKE (VERSION 1)
EU 34-48/UK 6-20/US 2-16
2 X STOP/FABRIC
INCL. 1 CM 3/8 SEAM ALLOWANCE

M/CF on fold cut on fold

HOW TO DO FASHION

NO.11 MALMO
HÅLSBELÄGNING RÅCK/NECK FACING BACK (VERSION 1)
EU 34-48/UK 6-20/US 2-16
1 X STOP/FABRIC
1 X VITSELLNING/INTERFACING
INCL. 1 CM 3/8 SEAM ALLOWANCE

M/CF

M/CF

1a

1b

1c

1d

HOW TO DO FASHION

NO.11 MALMO
SIDE-FOR STYKKE/SIDE-FRONT PIECE (VERSION 1)
EU 34-48/UK 6-20/US 2-16
2 X STOP/FABRIC
INCL. 1 CM 3/8 SEAM ALLOWANCE

HOW TO DO FASHION

NO.11 MALMO
HÅLSBELÄGNING RÅCK/NECK FACING FRONT (VERSION 1)
EU 34-48/UK 6-20/US 2-16
1 X STOP/FABRIC
1 X VITSELLNING/INTERFACING
INCL. 1 CM 3/8 SEAM ALLOWANCE

10 x 10 cm

