

How to do FASHION

Size chart EU/UK/US													
	32/4/0	34/6/2	36/8/4	38/10/6	40/12/8	42/14/10	44/16/12	46/18/14	48/20/16	50/22/18	52/24/20	54/26/22	
CHEST													
CM	80	84	88	92	96	101	106	112	118	124	131	138	
INCH	31.5	33.1	34.6	36.2	37.8	39.8	41.7	44.1	46.5	48.8	51.6	54.3	
WAIST													
CM	62	66	70	74	78	83	88	94	100	106	113	120	
INCH	24.4	26.0	27.6	29.1	30.7	32.7	34.6	37.0	39.4	41.7	44.5	47.2	
HIP													
CM	90	94	98	102	106	111	116	122	128	134	141	148	
INCH	35.4	37.0	38.6	40.2	41.7	43.7	45.7	48.0	50.4	52.8	55.5	58.3	



HOW TO MEASURE

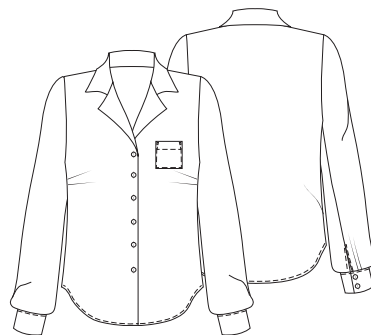
- Chest** - Measure around your full bust
- Waist** - Measure at the narrowest point
- Hip** - Measure at the widest point

All measurement have to be horizontal

Finished measurement No.26 Hamborg Version 1 & 2

	32/4/0	34/6/2	36/8/4	38/10/6	40/12/8	42/14/10	44/16/12	46/18/14	48/20/16	50/22/18	52/24/20	54/26/22	
BUST VERSION 1 & 2													
CM	87	91	95	99	103	108	113	119	125	131	138	145	
INCH	34.3	35.8	37.4	39.0	40.6	42.5	44.5	46.9	49.2	51.6	54.3	57.1	
WAIST VERSION 1 & 2													
CM	78	82	86	90	94	99	104	110	116	122	129	136	
INCH	30.7	32.3	33.9	35.4	37.0	39.0	40.9	43.3	45.7	48.0	50.8	53.5	
BUTTOM 1 & 2													
CM	91	95	99	103	107	112	117	123	129	135	142	149	
INCH	35.8	37.4	39.0	40.6	42.1	44.1	46.1	48.4	50.8	53.1	55.9	58.7	
LENGTH FROM TOP OF SHOULDER TO BOTTOM VERSION 1 & 2													
CM	64.00	65.00	66.00	67.00	68.00	69.00	70.00	71.00	72.00	73.00	74.00	75.00	
INCH	25.20	25.59	25.98	26.38	26.77	27.17	27.56	27.95	28.35	28.74	29.13	29.53	
SLEEVE LENGHT incl. cuff Version 1													
CM	71	72	73	74	75	76	77	78	79	80	81	82	
INCH	28.0	28.3	28.7	29.1	29.5	29.9	30.3	30.7	31.1	31.5	31.9	32.3	
SLEEVE LENGHT incl. cuff Version 2													
CM	23.5	24	24.5	25	25.5	26	26.5	27.3	28.1	28.9	29.7	30.5	
INCH	9.3	9.4	9.6	9.8	10.0	10.2	10.4	10.7	11.1	11.4	11.7	12.0	
UPPER ARM WIDTH													
CM	31.7	32.9	34.1	35.3	36.5	38.3	40.3	42.3	44.3	46.3	48.7	51.1	
INCH	12.5	13.0	13.4	13.9	14.4	15.1	15.9	16.7	17.4	18.2	19.2	20.1	

VERSION 1



VERSION 2

