

How to do FASHION

Size chart EU/UK/US													
	32/4/0	34/6/2	36/8/4	38/10/6	40/12/8	42/14/10	44/16/12	46/18/14	48/20/16	50/22/18	52/24/20	54/26/22	
CHEST													
CM	80	84	88	92	96	101	106	112	118	124	131	138	
INCH	31.5	33.1	34.6	36.2	37.8	39.8	41.7	44.1	46.5	48.8	51.6	54.3	
WAIST													
CM	62	66	70	74	78	83	88	94	100	106	113	120	
INCH	24.4	26.0	27.6	29.1	30.7	32.7	34.6	37.0	39.4	41.7	44.5	47.2	
HIP													
CM	90	94	98	102	106	111	116	122	128	134	141	148	
INCH	35.4	37.0	38.6	40.2	41.7	43.7	45.7	48.0	50.4	52.8	55.5	58.3	



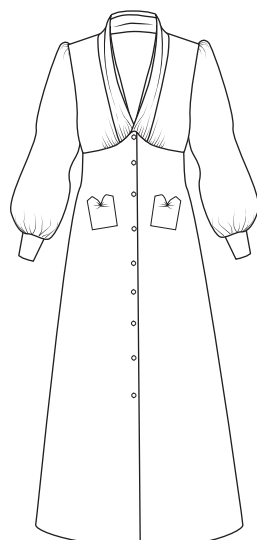
HOW TO MEASURE

Chest - Measure around your full bust
 Waist - Measure at the narrowest point
 Hip - Measure at the widest point

All measurement
 have to be horizontal

Finished measurement NO. 29 MILANO VERSION 1 & 2													
	32/4/0	34/6/2	36/8/4	38/10/6	40/12/8	42/14/10	44/16/12	46/18/14	48/20/16	50/22/18	52/24/20	54/26/22	
CHEST													
CM	82	86	90	94	98	103	108	114	120	126	133	140	
INCH	32.3	33.9	35.4	37.0	38.6	40.6	42.5	44.9	47.2	49.6	52.4	55.1	
WAIST													
CM	66	70	74	78	82	86	91	97	103	109	116	123	
INCH	26.0	27.6	29.1	30.7	32.3	33.9	35.8	38.2	40.6	42.9	45.7	48.4	
HIP													
CM	93	97	101	105	109	114	119	125	131	137	144	151	
INCH	36.6	38.2	39.8	41.3	42.9	44.9	46.9	49.2	51.6	53.9	56.7	59.4	
LENGTH FROM TOP OF SLEEVE TO BOTTOM OF SLEEVE INCL. CUFF													
CM	62	63	64	65	66	67	68	69	70	71	72.3	73.6	
INCH	24.4	24.8	25.2	25.6	26.0	26.4	26.8	27.2	27.6	28.0	28.5	29.0	
UPPER ARM WIDTH													
CM	40.4	41.8	43.2	44.6	46	48	50	52	55	57	60	63	
INCH	15.9	16.5	17.0	17.6	18.1	18.9	19.7	20.5	21.7	22.4	23.6	24.8	
LENGTH FROM TOP OF SHOULDER TO BOTTOM VERSION 1													
CM	80	81.5	83	84.5	86	129	130.5	132	133.5	135	136.5	138	
INCH	31.5	32.1	32.7	33.3	33.9	50.8	51.4	52.0	52.6	53.1	53.7	54.3	
LENGTH FROM TOP OF SHOULDER TO BOTTOM VERSION 2													
CM	54.1	55	55.9	56.8	57.7	58.6	59.5	60.4	61.3	62.2	63.1	64	
INCH	21.3	21.7	22.0	22.4	22.7	23.1	23.4	23.8	24.1	24.5	24.8	25.2	

VERSION 1



VERSION 2

